

Veterinary Sets



Professional Endoscopic
Equipment Manufacturer



OEM / ODM Service
Top Quality Product

Contents

Endoscopic Camera	3
Cold Light Source	4
CO2 Insufflator	9
Suction & Irrigation Pump.	12
Medical Monitor.	17
Electrosurgical Unit	20
Ultrasonic Harmonic Scalpel	21
Shaver System	22
Accessories	23
VET Endoscopes and Accessories	27

CM1080P FULL HD Endoscopy Camera

FEATURES

- ★1/3" x CMOS
- ★Full HD 1920 x 1080 pixels
- ★16:9 OR 16:10 format (Aspect Ratio)
- ★Progressive scanning 1080p
- ★USB Video recorder, replay and storage system(**Optional**)
- ★Five user settings for different users or endoscopy surgery
- ★Full digital chain achieved on DVI-D or HD-SDI digital output

- ★W/B and Freeze function key on the camera head

STANDARD FEATURES

- 1x CCU
- 1x CCD head with C-Mount-28S
- 1xDVI-D video cable, 1xComposite video cable, 1xS-Video cable
- 1x Power cable

Technical data is subject to change without notice



L60 LED Light Source

FEATURES

- ★60W LED bulb
- ★With maximum life cycle 50,0000 hours
- ★illuminance \geq 2000Lm and CRI \geq 90
- ★Color temp. approx. 5600k to 6500k
- ★Wolf light output connection

STANDARD FEATURES

- 1x Light unit
- 1x Fiber cable
- 1x Power cable

Technical data is subject to change without notice.

***According to the test setup by the manufacturer, service life may be shorter when used under unfavorable conditions (e.g. MANY on/off cycles).**



COLD LIGHT SOURCE

X300 Xenon Light Source

FEATURES

- ★ 300W Xenon bulb
- ★ With maximum life cycle 500 hours
- ★ illuminance $\geq 2200\text{Lm}$
- ★ Color temp. 6500k
- ★ Wolf light output connection

STANDARD FEATURES

- 1x Light unit
- 1x Fiber cable
- 1x Power cable

Technical data is subject to change without notice.

***According to the test setup by the manufacturer, service life may be shorter when used under unfavorable conditions (e.g. MANY on/off cycles).**



PL10 Portable LED Light Source

FEATURES

- ★ For emergency
- ★ No fiber-optic cables to break or replace
- ★ Complete freedom of movement
- ★ Portable ultra bright 140,000 L x LED light source
- ★ Revolutionary LED bulb will last for at least 2,000 hours
- ★ Sufficient illumination for endoscopy cameras
- ★ Tough metal casing, perfect cooling
- ★ Connections available for various endoscopes
- ★ Suitable for various video cameras, rigid and fiberscopes
- ★ Lithium Battery lasts for up to 1 hour with charger

STANDARD FEATURES

- 1x Light unit-10W
- 1x Charger
- 2x Batteries

Technical data is subject to change without notice.

***According to the test setup by the manufacturer, service life may be shorter when used under unfavorable conditions (e.g. MANY on/off cycles).**



COLD LIGHT SOURCE

PL05 Portable LED Light Source

FEATURES

- ★For emergency, no fiber-optic cables to break or replace
- ★Complete freedom of movement
- ★Portable ultra bright 140,000 L x LED light source
- ★Revolutionary LED bulb will last for at least 2,000 hours
- ★Sufficient illumination for endoscopy cameras
- ★Tough metal casing, perfect cooling
- ★Connections available for various endoscopes
- ★Suitable for various video cameras, rigid and flexible endoscopes
- ★Lithium Battery lasts for up to 1 hour with charger

STANDARD FEATURES

- 1x Light unit-5W
- 1x Charger
- 2x Batteries

Technical data is subject to change without notice.

***According to the test setup by the manufacturer, service life may be shorter when used under unfavorable conditions (e.g. MANY on/off cycles).**



i40H CO2 Insufflator

FEATURES

- ★ Minimum accuracy is 1l/min.
- ★ Touch Screen control.
- ★ Super wide flow rate from 2l/min to 40l/min
- ★ Automatic light and sound alarm system.
- ★ Successional gas supply design for great safety.

STANDARD FEATURES

- 1x Insufflator unit
- 1x Veress needle
- 1x High pressure tube
- 1x Pressure valves unit
- 1x Insufflator tube with CO2 filter
- 1x Power cable

Technical data is subject to change without notice.



Co2 INSUFFLATOR

i40 CO2 Insufflator

FEATURES

- ★ Fully automatic with heating system
- ★ Super wide flow rate from 2l/min to 40l/min
- ★ Automatic light and sound alarm system
- ★ Successional gas supply design for great safety
- ★ LCD control panel
- ★ Suitable for Wolf and Stryker insufflator connector

STANDARD FEATURES

- 1x Insufflator unit
- 1x Veress needle
- 1x High pressure tube
- 1x Pressure valves unit
- 1x Insufflator tube with CO2 filter
- 1x Power cable

Technical data is subject to change without notice.



i30 CO2 Insufflator

FEATURES

- ★ Fully automatic and quiet operation
- ★ 3 level flow rate 10l/min, 20l/min, 30l/min
- ★ Automatic light and sound alarm system
- ★ Successional gas supply design for great safety

STANDARD FEATURES

- 1x Insufflator unit
- 1x Veress needle
- 1x High pressure tube
- 1x Pressure valves unit
- 1x Insufflator tube with CO2 filter
- 1x Power cable

Technical data is subject to change without notice.



iP7002 Suction and Irrigation Pump

FEATURES

- ★ No need replacement of sensor release gaskets frequently
- ★ Irrigation and Suction function
- ★ The same unit suitable for Arthroscopy, Hysteroscopy and Urology systems
- ★ Sterile tubing sets with outstanding Siemens sensor, with two channels
- ★ Super wide pressure presetting range from 50mmHg to 700mmHg
- ★ Super wide flow rate presetting range from 10ml/min to 1500ml/min
- ★ Suction pressure presetting range from 15mmHg to 400mmHg
- ★ Suction flow rate presetting range from 1000ml/min to 3000ml/min

STANDARD FEATURES

- 1x Pump unit
- 1x Sterile tubing sets with sensor
- 1x Power cable

Technical data is subject to change without notice.



iP700 Irrigation Pump

FEATURES

- ★The same unit suitable for Arthroscopy, Hysteroscopy and Urology systems
- ★Sterile tubing sets with outstanding Siemens sensor, with two channels
- ★Super wide pressure presetting range from 50mmHg to 700mmHg
- ★Super wide flow rate presetting range from 10ml/min to 1500ml/min
- ★LCD display

STANDARD FEATURES

- 1x Pump unit
- 1x Sterile tubing sets with sensor
- 1x Power cable

Technical data is subject to change without notice.



iP7001 Irrigation Pump

FEATURES

- ★The same unit suitable for Arthroscopy, Hysteroscopy and Urology systems
- ★Sterile tubing sets with outstanding Siemens sensor, with two channels
- ★Super wide pressure presetting range from 50mmHg to 400mmHg
- ★Super wide flow rate presetting range from 10ml/min to 1000ml/min

STANDARD FEATURES

- 1x Pump unit
- 1x Sterile tubing sets with sensor
- 1x Power cable

Technical data is subject to change without notice.



SiP500 Suction and Irrigation Pump

FEATURES

- ★ Fully automatic, no need adjust the pressure of suction and irrigation during the surgery
- ★ Low noise with superior performance, special filters ensure optimally sterile conditions for M.I.S.

STANDARD FEATURES

- 1x Pump unit
- 1x Irrigation tube set
- 1x 2000ml collection container for suction
- 1x Tubing for irrigation (2.5m x ϕ 6mm, 1.4m x ϕ 8mm)
- 1x Tubing for suction (2.5m x ϕ 6mm, 0.5m x ϕ 8mm)
- 1x Power cable

Technical data is subject to change without notice.



SUCTION AND IRRIGATION PUMP-LAPAROSCOPY

SiP5001 Suction and Irrigation Pump

FEATURES

- ★ Maximum liquid volume $\geq 5000\text{ml}/\text{min}$
- ★ Fully automatic, no need adjust the pressure of suction and irrigation during the surgery
- ★ Low noise with superior performance, special filters ensure optimally sterile conditions for M.I.S.

STANDARD FEATURES

- 1x Pump unit
- 1x Irrigation tube set
- 1x 2000ml collection container for suction
- 1x Tubing for irrigation (2.5m x $\phi 6\text{mm}$, 1.4m x $\phi 8\text{mm}$)
- 1x Tubing for suction (2.5m x $\phi 6\text{mm}$, 0.5m x $\phi 8\text{mm}$)
- 1x Power cable

Technical data is subject to change without notice.



M24H/M26H 24" / 26" Full HD Monitor

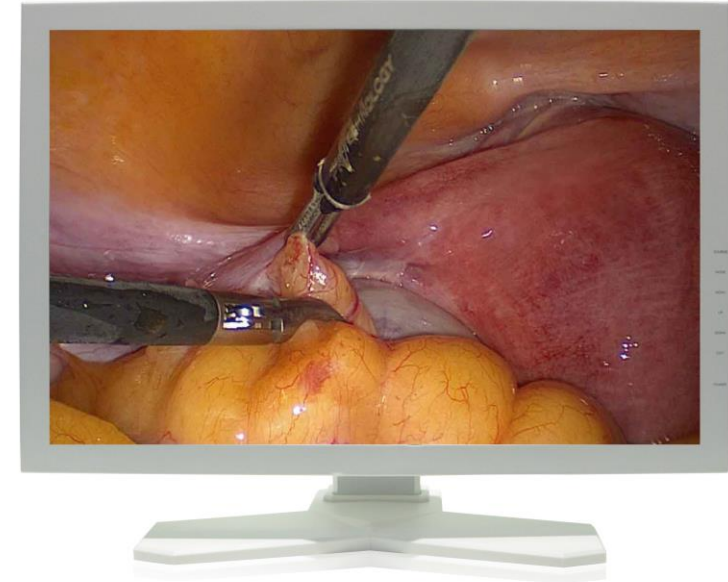
FEATURES

- ★ Backlight stabilization system
- ★ Built-in multiple display mode
- ★ Professional protective glass
- ★ True color restore
- ★ Wide viewing angle

STANDARD FEATURES

- 1x Monitor
- 1x DVI-D video cable, 1x SDI video cable
- 1x Power adapter
- 1x Power cable

Technical data is subject to change without notice.



M215H 21.5" Full HD Monitor

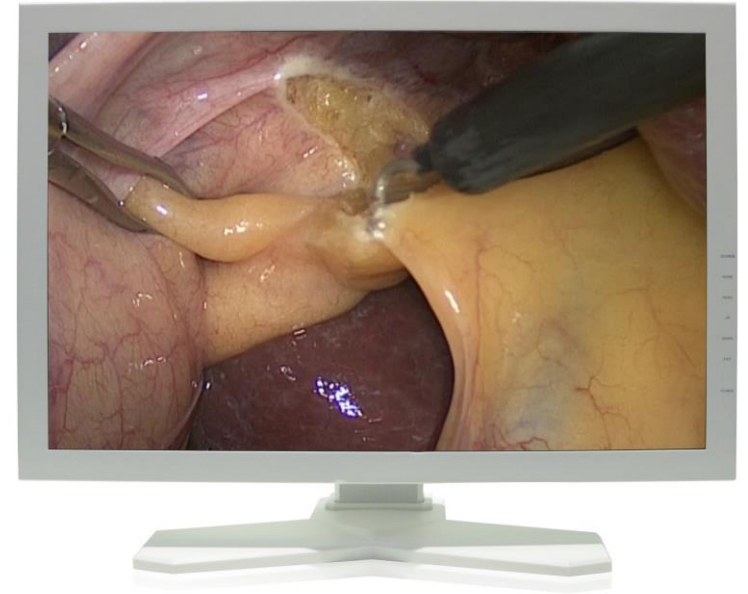
FEATURES

- ★ Backlight stabilization system
- ★ Built-in multiple display mode
- ★ Professional protective glass
- ★ True color restore
- ★ Wide viewing angle

STANDARD FEATURES

- 1x Monitor
- 1x DVI-D video cable, 1x SDI video cable
- 1x Power adapter
- 1x Power cable

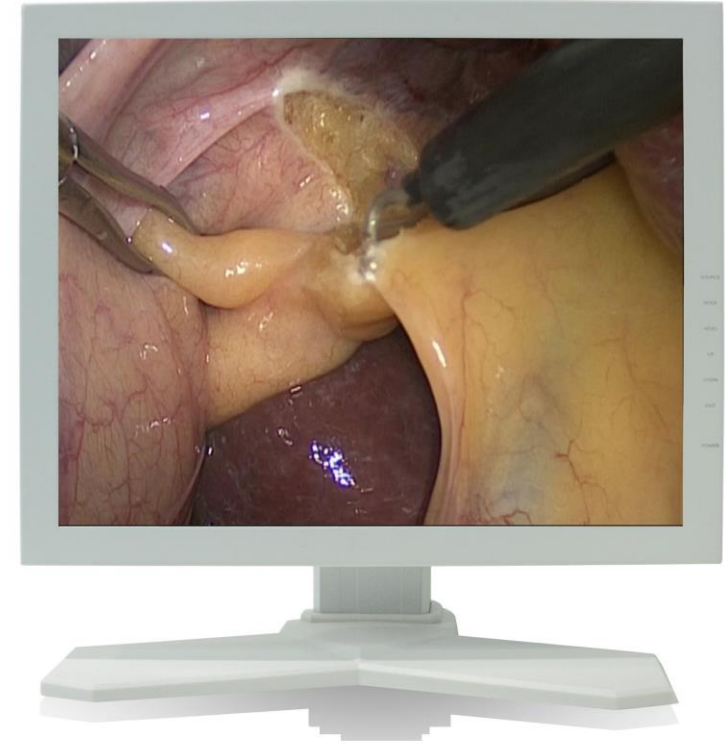
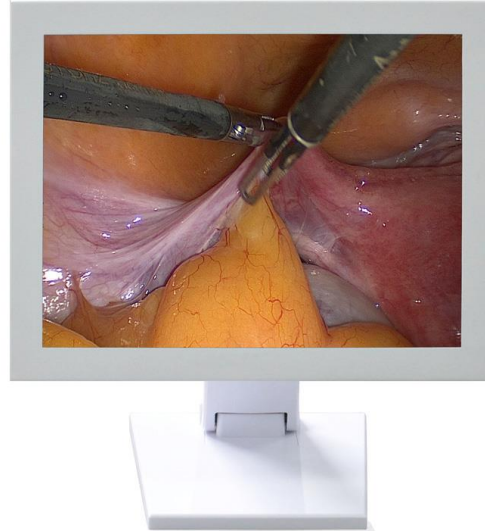
Technical data is subject to change without notice.



M190S 19" / 15" HD Monitor

FEATURES

- ★ Backlight stabilization system
- ★ True color restore
- ★ Signal input and output function
- ★ Built-in multiple display mode
- ★ Support PIP dual screen



STANDARD FEATURES

- 1x Monitor
- 1x BNC video cable / 1X S-Video cable
- 1x Power adapter
- 1x Power cable

Technical data is subject to change without notice.

Power 420-X

Can be used for most surgical procedures. Ideal for use in general surgery like laparoscopy.

TECHNICAL DATA

OUTPUT POWER

Pure Cut	300W (500Ω)
Blend 1	250W (500Ω)
Blend 2	200W (500Ω)
Blend 3	120W (500Ω)
Monopolarcoag	120W (500Ω)
Bipolarcoag	50W (100Ω)

Type of the apparatus: Model CF, Class I, anti-defibrillation common equipment

Working frequency: 512 KHz

Working mode: terval loading and continuous operating, temprary

Power Supply: AC110V/220V+10%, 60/50Hz+1Hz, max.current≤3.5A

Size: 450x335x175mm

Technical data is subject to change without notice.

STANDARD FEATURES

- 1x Mainfram
- 1x Duplex Foot-switch for monopole and pencil
- 1x Power Cable
- 1x Neutral polar plate, 1x Hand-switch pencil
- 1x Bipolar Nipper
- 1x Simplex Foot-switch for bipolar



ULTRASONIC HARMONIC SCALPEL SYSTEM

Ultrasonic Harmonic Scalpel



FEATURE:

Frequency of blade vibration: 55.5KHZ(longitudinal)

Blade vibration amplitude:60 to 100um and total 5 levels to be adjusted.

Arthroscopy Shaver System



G4011 关节刀头 斜口有齿
Blade, inside with tooth



G4012 关节刀头 斜口无齿
Blade, without tooth



G4014 关节刀头 球状
Blade, round bur



G4013 关节刀头 内外有齿
Blade, inside & outside with tooth

FEATURES

- Output Torque: 45mNm
- Max.output rotate speed: 8000rpm
- Governor deflection: 3 level adjustable, stepless speed change
- Max.power: 110AV

Technical data is subject to change without notice.



Zoom Adapter/ C-Mount / Coupler

Zoom Adapter:

1st. 15mm to 25mm

2nd. 18mm to 35mm

3rd. 20mm to 35mm (No need focus while adjust the zooming)



C-Mount / Coupler



C-Mount / Coupler: 18mm, 22mm, 25mm, 28mm, 32mm, 35mm

Fiber Cable of Cold Light Source

Specification:



$\Phi 5 \times 2M$	Ordinary
$\Phi 5 \times 2.5M$	Ordinary
$\Phi 5 \times 3M$	Ordinary
$\Phi 5 \times 3.5M$	Ordinary
According to your request...	Ordinary

Technical data is subject to change without notice.

Trolley / Endo-carts

Specification:



Ergonomic design	Pure metal structure with one drawer and electrical power outlet
Five level work table	With 150kg load capacity
Detachable	Yes
Light, mobile and flexible	Yes
Table size	≥ 50x50cm
Packing measurement	123x64x23cm
N.W.	25kg
G.W.	38kg

Technical data is subject to change without notice.

Vet Otoscopy Set A (OY)

Standard Features:



1. Endoscope with 2 stopcocks and 2mm channel	0°, Φ5x85mm
2. Biopsy forceps - flexible	5Fr x 260mm / 230mm
3. Serrated forceps - flexible	5Fr x 260mm / 230mm
4. Portable LED light source-5W	5W LED BULB with rechargeable battery



Biopsy forceps flexible
5Fr x 260mm or 230mm

Serrated forceps flexible
5Fr x 260mm or 230mm

Foreign body forceps flexible
5Fr x 260mm or 230mm

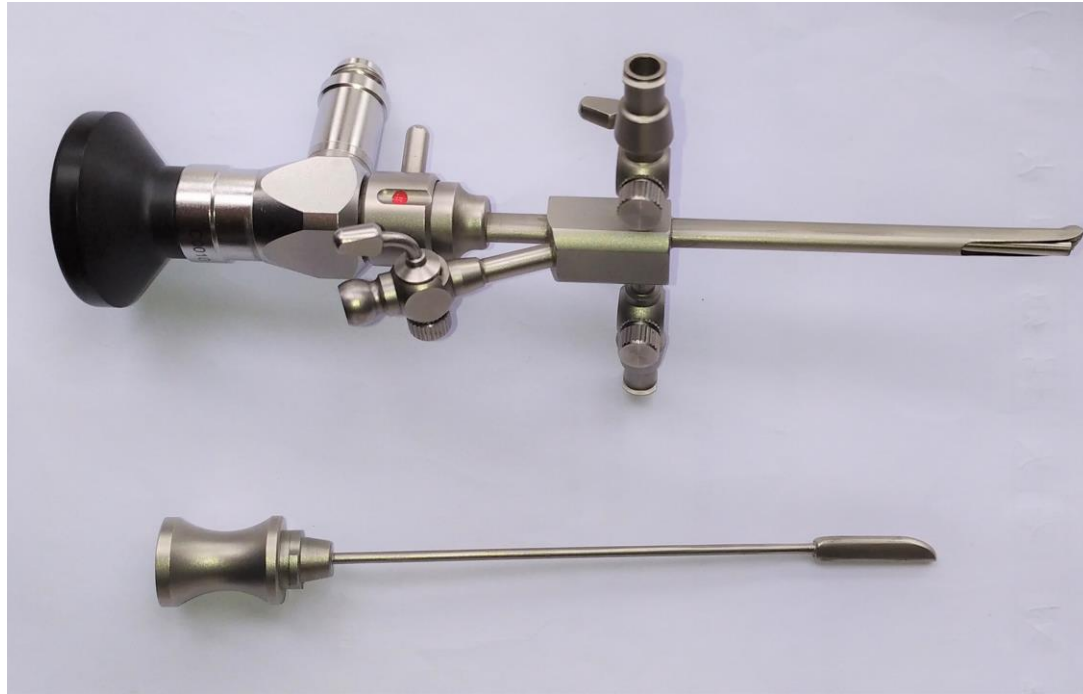


Technical data is subject to change without notice.

Vet Endoscope Set B (TS)

Standard Features:

- 2pcs 0°/30° x 2.7mm x108/110mm Endoscope
- 1pc sheath and 1pc 5W Led light source
- 1pc working cannula
- 2pcs Flexible forceps



Technical data is subject to change without notice.

Vet Rhinoscope Set A (TS)

Standard Features:

- 1pc 2.7mm x 175mm x 0° Endoscope
- 1pc working cannula
- 1pc Biopsy forceps–flexible
- 1pc 5W LED portable light source



Biopsy forceps flexible
5Fr x 260mm or 230mm

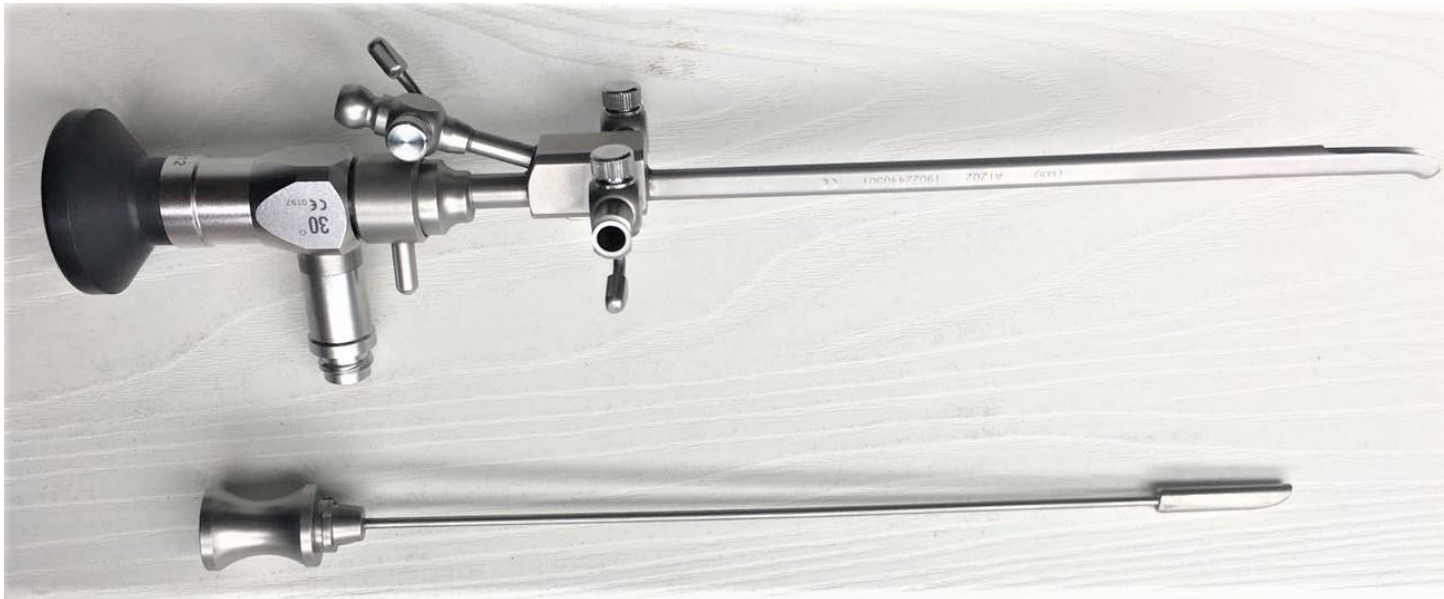
Serrated forceps flexible
5Fr x 260mm or 230mm

Foreign body forceps flexible
5Fr x 260mm or 230mm

Vet Arthroscope Set A (TSSD)

Standard Features:

- 1pc 0°/30° x 2.7mm x175mm Endoscope
- 1pc sheath and 1pc 5W Led light source
- 1pc working cannula
- 2pcs Flexible forceps 5fr x150mm/230mm/260mm



Technical data is subject to change without notice.

ENDOSCOPES AND ACCESSORIES

Vet Laparoscope Set A (SDYD)

Standard Features:

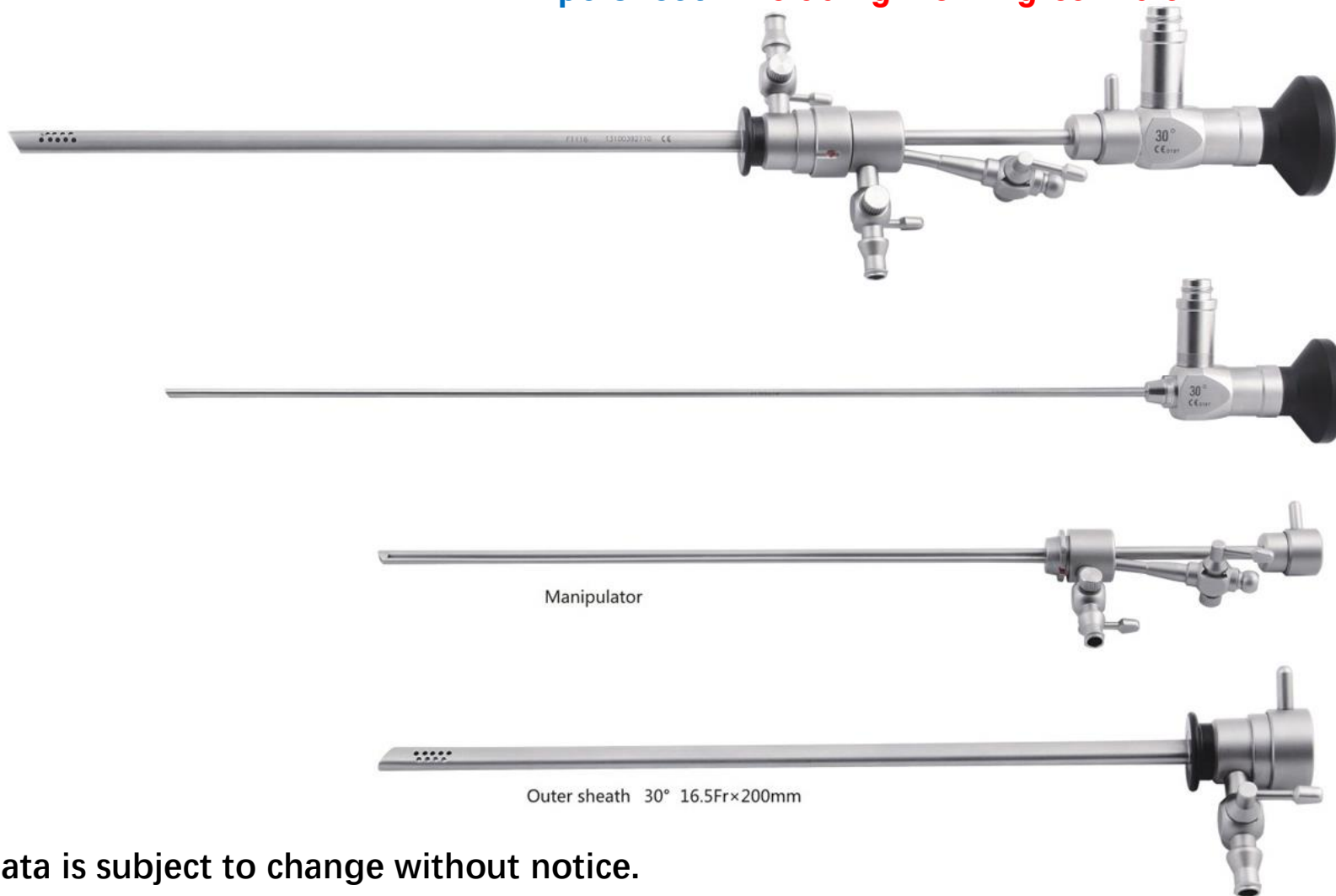
- 1pc 5mm x 290mm x 0° **OR** 30° Endoscope
- 1pc Trocar
- 1pc Forceps-rigid
- 1pc Scissors-rigid
- 1pc 10W LED portable light source



Technical data is subject to change without notice.

Veterinary Artificial Insemination Hysteroscope with Sheath(A)

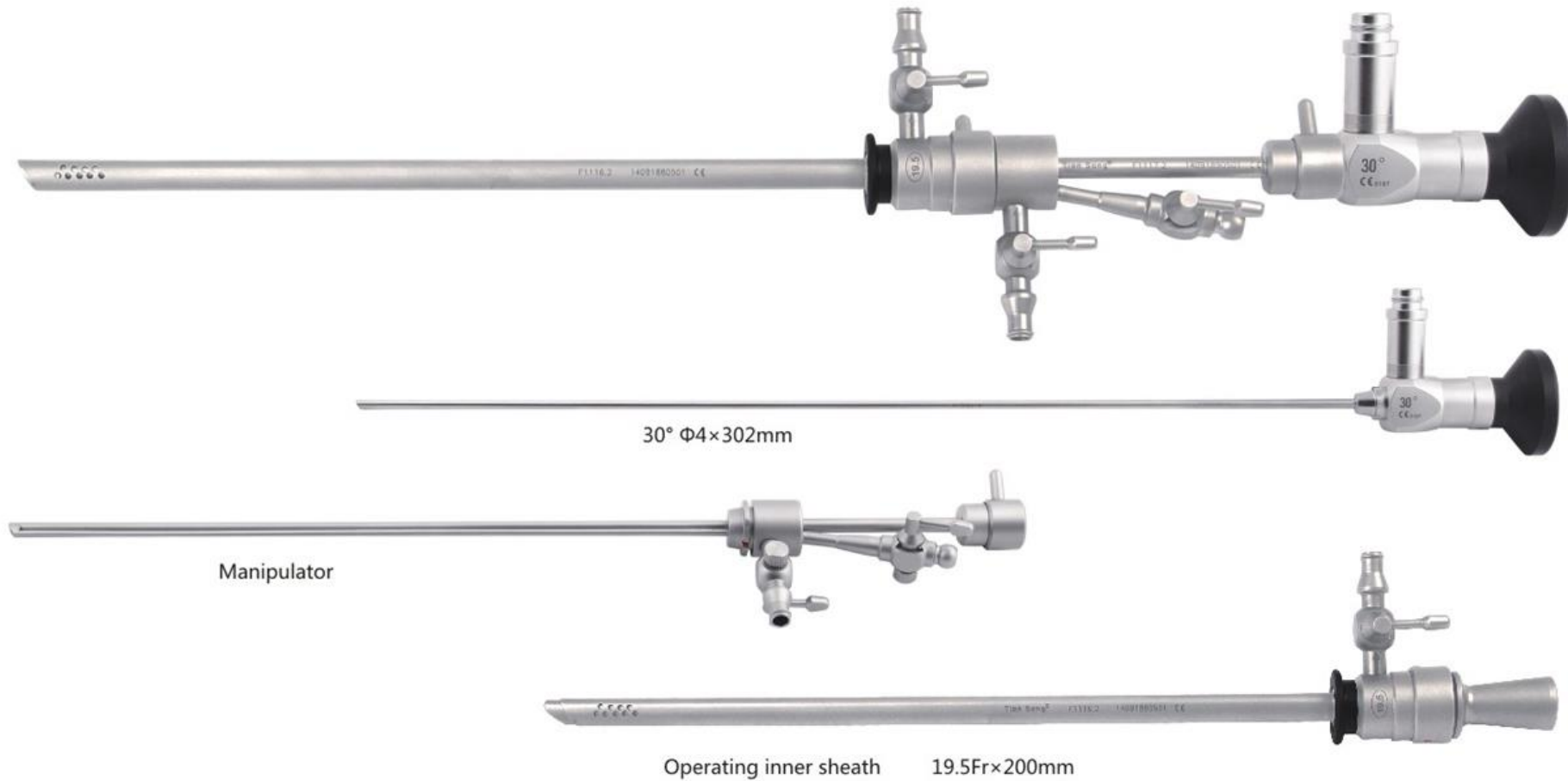
- Standard Features:
- 1pcs 30° x ϕ 3mm OR ϕ 2.9mm Endoscope
 - 1pc sheath including working cannula



Technical data is subject to change without notice.

Veterinary Artificial Insemination Hysteroscope with Sheath (B)

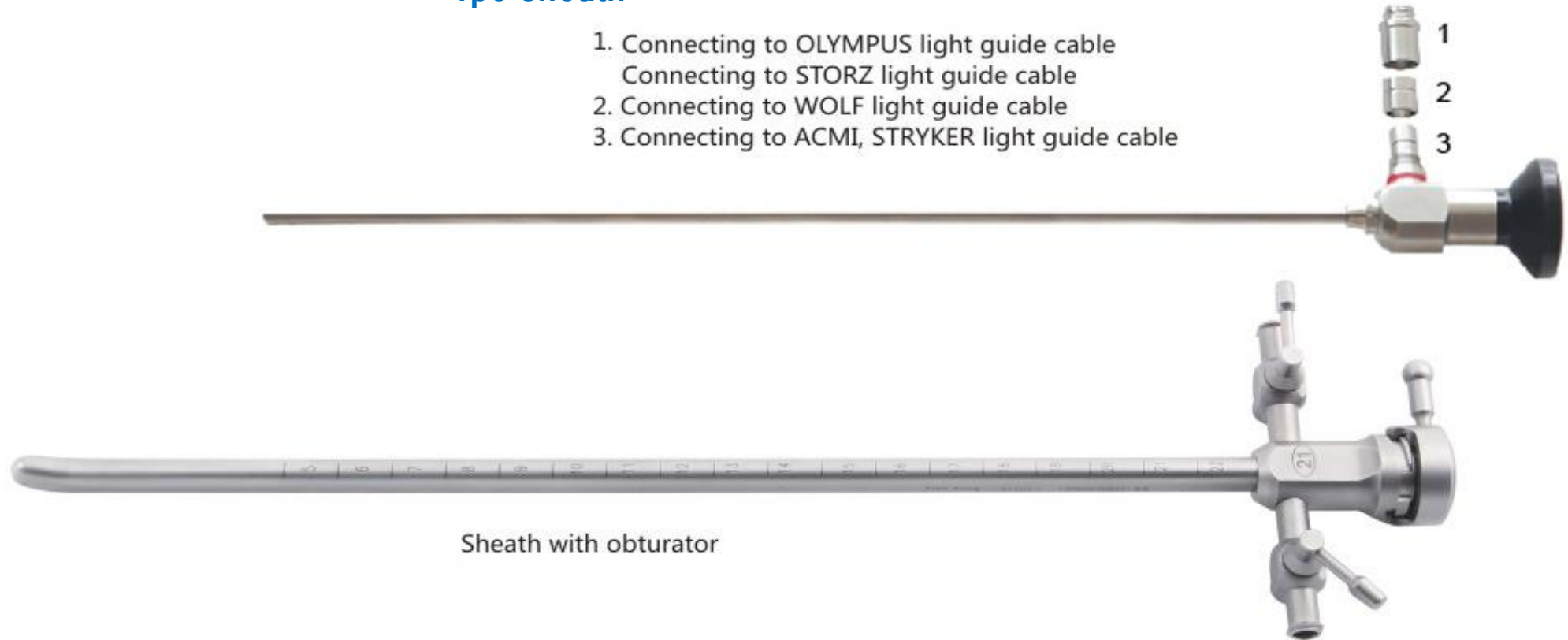
- Standard Features:**
- 1pcs 30° x ϕ 4mm Endoscope
 - 1pc sheath including working cannula



Veterinary Artificial Insemination Cystoscope with Sheath (A)

- Standard Features:**
- 1pcs 30° x ϕ 3mm OR ϕ 2.9mm OR ϕ 4mm Endoscope
 - 1pc sheath

1. Connecting to OLYMPUS light guide cable
Connecting to STORZ light guide cable
2. Connecting to WOLF light guide cable
3. Connecting to ACMI, STRYKER light guide cable



Technical data is subject to change without notice.

Vet Endoscopes (OYTS)

- 30° x 5.5mm x 500mm Endoscope
- 12° x 2.9mm x 360mm Endoscope
- 12° x 5.5mm x 540mm Endoscope
- 0° x 3mm x 358mm Endoscope
- 30° x 3mm x 358mm Endoscope



Technical data is subject to change without notice.